

STUDLEY HOUSE FARM

Studley House Farm, 67 Main Street
Eberston
Scarborough
North Yorkshire
YO13 9NR

**Proposal for Caravan site extension,
Caravan storage barn,
and Storage shed**

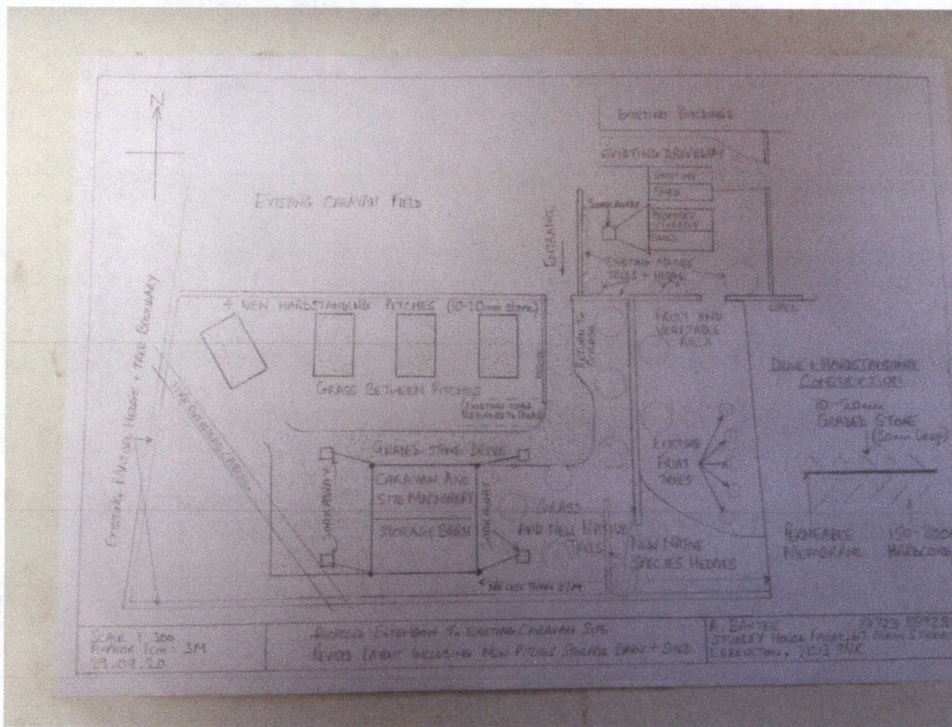
DC Contributor Clarification

Contributer Clarification

After reading some of the DC consultation contributions and consulting the planning department, I would like to clarify a couple of points:

1. Overview of the proposed site

This plan now clearly shows that the minimum distance from the East side of the barn to the boundary with Number 73 as a minimum of 37 meters to clear the overhead cables.



2. Outside lighting

There will only be one external light. This will be fitted to the proposed barn and sited on the north-west corner. It will be activated by a movement sensor. I have included a copy of the specification for the light fitting and bulb.

CATALOGUE RANGE: ■ Ceiling/Wall/Bulkheads

PERFECT FOR OUTDOOR APPLICATIONS REQUIRING CORNER LIGHTING

Eterna
Everyday Lighting For Professionals

Shown with Optional Corner Brackets

Replacement diffuser available - WELL DIFF

EternaPro LED 5 YEAR Warranty*

ENERGY CLASS A+
9.50 kWh/1000h

This luminaire is compatible with bulbs of the energy classes:

This luminaire is sold with a bulb of the energy class: A+

674/2012

LED WELL GLASS FITTING WITH PC DIFFUSER & OPTIONAL CORNER BRACKET

- Requires 1 x LED E5 lamp (included). Fitting is rated at 230V max
- This luminaire is compatible with bulbs of the energy classes: A+ to E and is sold with a bulb of the energy class A+
- Bracket included for optional corner mounting; complete solution for flat wall or corner mounting
- Aluminium alloy construction in white or black finish with white polycarbonate diffuser
- Low energy consumption and prolonged lamp life
- BESA box mounting
- M.Q.M. 1 / O.P.Q. 4

Flexible fittings ideally suited for outdoor applications requiring corner lights

LED LAMP SPECIFICATIONS:

Nominal luminous flux	806 lm
Rated Wattage	9.5W
Rated luminous flux	806 lm
Nominal life time of the lamp	25,000 hrs
Colour temperature	2700K
Number of switching cycles before premature lamp failure	100,000
Warm-up time up to 60% of the full light output	Instant full light
Dimmable	No
Lamp dimensions (LxW)	110x60mm
Nominal beam angle	220°
Cap type	E5 (E27)
Rated power	9.5W
Rated lamp lifetime	25,000 hrs
Lamp power factor	>0.5
Lumen maintenance factor at end of nominal life	>70%
Starting time	Instant full light
Colour rendering	>80 Ra
Colour consistency	Within 6 step Macadam ellipse
Rated beam angle	220°
Voltage	240V
Frequency Hz	50Hz

Code	Colour	Wattage	Colour Temp.	Lumens	Avg. Rated Life (hrs)	IP Rating
WGLEDK	Black	9.5W	2700K	806 lm	25,000 hrs	IP65
WGLEDWH	White					

FREE DELIVERY OVER £30

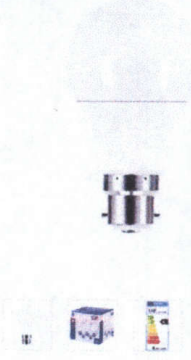
CLICK & COLLECT

FREE RETURN

COVID-19 Service Update

LAP BC GLS LED LIGHT BULB 806LM 9.5W 5 PACK (5884T)

£10.25
INC VAT



10 GLS LED LIGHT BULB 806LM 9.5W 5 PACK (5884T)

★★★★★ [View reviews \(487\)](#)

[View all Q&A](#)

Varm White

Dimmable

Wattage: 9.5W / Equivalent Wattage: 60W

- Up to 25,000 Hours Life
- 9.5kWh/1000h Life
- Energy Rating: A+
- 3 Year Manufacturer's Guarantee (T&Cs Apply)
- Full Instant Light
- Energy Efficient

[More Info](#)

View all: [LAP Light Bulbs](#)

£10.25
INC VAT

SPECIFICATION

Brand	LAP
Dimmable	Dimmable
Energy Rating	A+
Equivalent Wattage	60 W
Equivalent Wattage Band	46-60
kWh Per 1000hr Life	9.5 kWh/1000h
Life Length	25,000 hours
Light Bulb Technology	LED
Light Bulb Type	GLS
Lm	806 lm
Lm Band	801-1000
Manufacturer Guarantee	3 Year Manufacturer's Guarantee (T&Cs Apply)
Pack Size	5
Pieces In Pack/Case	5
Power Consumption	9.5 W
Power Factor Value	Greater than 0.5
Product Diameter	60 mm
Product Length	106 mm
Product Type	Light Bulb
Smart Compatibility	Not Smart